



x4 POST
OPEN / CLOSED
FRONT LIFT
+ ACCESSORIES

TLS415ALOXR1
TLS415FD0XR1
TLS415ALCXR1
TLS415FDC0XR1
SERIES

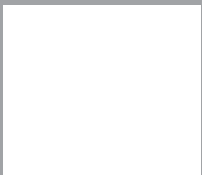
TLSLIFTS.COM



x4 POST OPEN/CLOSED FRONT

WHEEL ALIGNMENT
OR SERVICE LIFTS

x4 Post Open / Closed Front Designs feature 'Camber Neutral' technology, double wall runways with "Z" rails, built in radius plate pockets & rear slip plates. Clear access, single point control with stainless steel cylinder air releases & engage 12 locking positions. Adjustable locking ladders 81"x 2-3/4" x 3/8" / 2057mm x 70mm x 9.5mm thick allow for accurate levelling. Power unit can be mounted on a front or rear column.



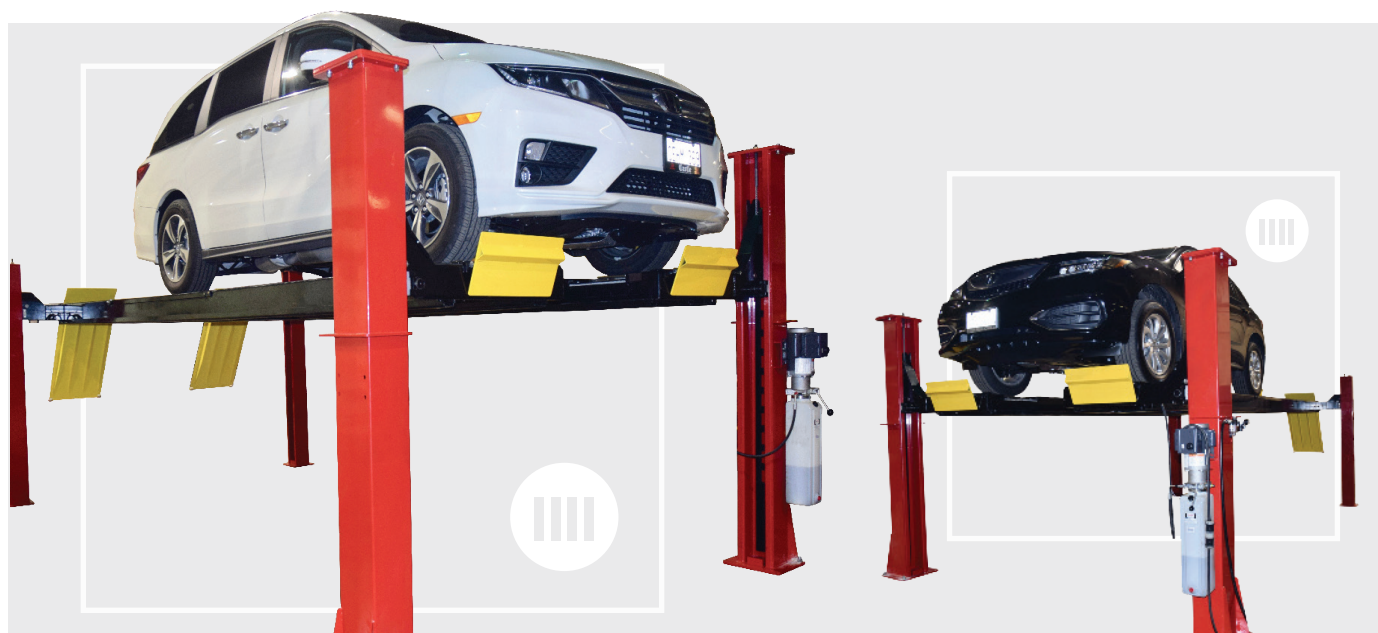


x4 POST OPEN / CLOSED FRONT

AUTOMOTIVE + LIGHT TRUCK GENERAL SERVICE

15,000 LB. / 6.8T Capacity

x4 POST OPEN / CLOSED FRONT WHEEL ALIGNMENT OR SERVICE



FEATURES

BUILT TO HIGHER QUALITY STANDARD/100% NORTH AMERICAN MADE :

Premium US Bucher 2HP / 1.5kw power unit.

CORROSION RESISTANT PROTECTION :

Steel components are wheel-a-brator shot blasted & acid washed before a "double bake" powder coat finish is applied.

SUPERIOR STRUCTURAL STRENGTH PROVIDES LONGER LIFE AND MORE PRECISE ALIGNMENTS :

Non flex double wall 23"/ 584mm wide runways with built in "Z" rail. Heavy duty 10"x 8-3/8"x 1/4" wall / 254mm x 213mm x 6mm wall columns & 3" x 8-1/4"/ 72mm x 210mm tube traverse beams.

GREATER FLEXIBILITY WITH MORE MODELS TO CHOSE FROM :

Available in two runway lengths with built in wheel alignment or service deck. Lift can be ordered in red or blue.

PREMIUM OPTIONS + ACCESSORIES CAN EXPAND THE CAPABILITIES + SERVICE LIFE

Stainless steel radius plates & rear steer plates, built in tire inflation hoses, removable work steps, LED runway lighting & premium long life 5 yr warranty HD jacking beams.

LOWER MAINTENANCE COSTS :

Zirk style grease fittings at all 1-1/2" / 38mm plated hinge pins. Runway under rear slip plates is open to prevent water & dirt collecting. Thirty 7/8" / 22mm

enclosed plated steel slip plate balls provide better support with minimal maintenance.

EXTENDED LIFE "NON TWIST" CABLE DESIGN :

Machined steel nickel plated 9"/ 229mm pulleys with bronze self lubricating bushings. Non spin fatigue resistant 9/16"/ 14mm cables are routed on double stacked pulleys (versus four stacked) to reduce stress & wear.

LOW PRESSURE HYDRAULICS PROVIDES LONGER LIFE

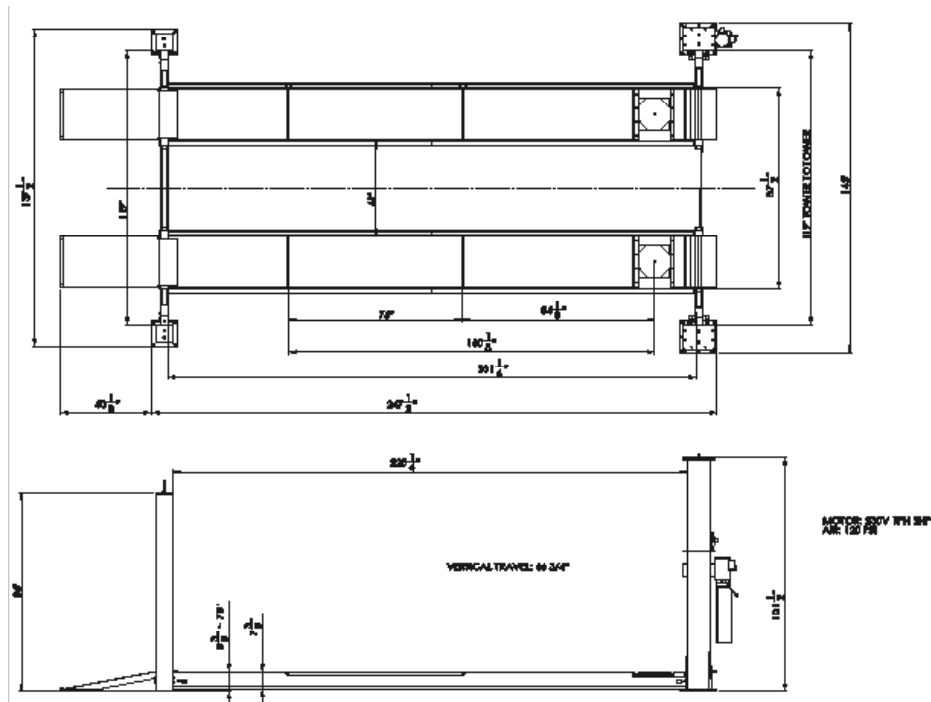
4" ID x 65"/ 102mm ID x 1651mm cylinder is mounted under the runway and use a premium "Parker" seal & wear ring with chrome plated plunger shaft.

TLSLIFTS.COM



LIFT SPECIFICATIONS

x4 POST OPEN / CLOSED FRONT LIFTS	
CAPACITY	15,000 lbs / 6.8T
OVERALL LENGTH EXTENDED MODEL	285 - 1/8" / 7242 mm
OVERALL LENGTH STANDARD MODEL	257 - 7/8" / 6550 mm
DECK LENGTH EXTENDED MODEL	237" / 6020mm
DECK LENGTH STANDARD MODEL	210" / 5334mm
OVERALL WIDTH	OPEN FRONT : 143"/3632mm / CLOSED FRONT : 137 1/2 / 3493mm
DECK WIDTH	23" / 584mm
LOWERED HEIGHT	8 - 3/8" / 213mm
RAISED HEIGHT	75" / 1905mm
MIN. 4 WHEEL ALIGN. WB	88 - 1/2" / 2248mm
MAX. SERVICE WB	232" or 205" / 5892mm or 5207mm
LIFT TIME	70 seconds
LIFT TIME	230V-60Hz-1 Ph-20amp
SHIPPING WEIGHT	5,000 lb. / 2.3T



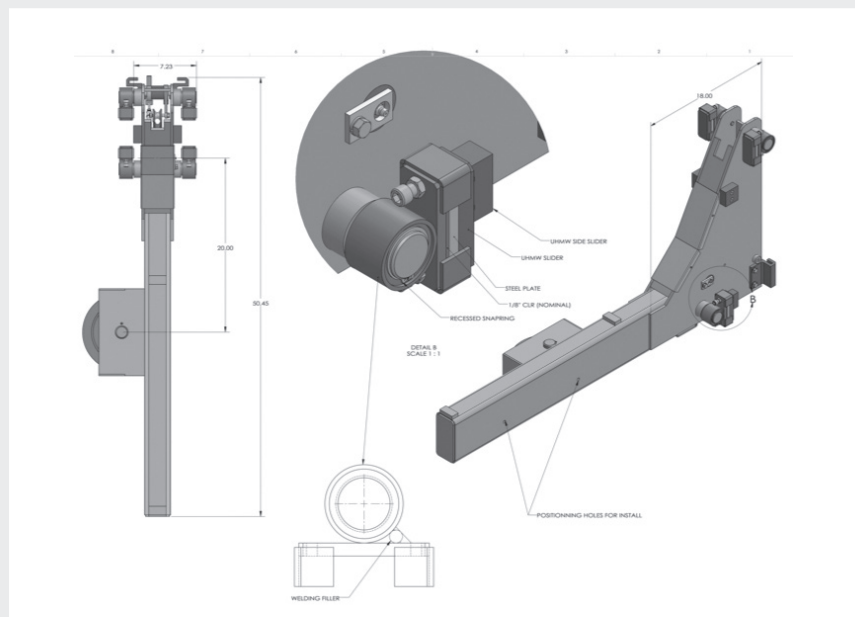


OPEN / CLOSED FRONT ADDITIONAL FEATURES + ACCESSORIES

Increase productivity & versatility

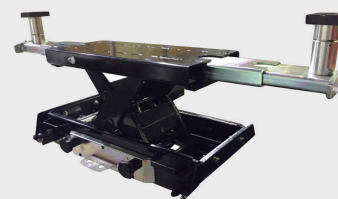
ADDITIONAL FEATURES

+ 'CAMBER NEUTRAL' ADJUSTABLE FRONT ARMS



OPTIONAL ACCESSORIES

1



JACKING BEAM

TLS-RJ7500HD

2



STAINLESS STEEL TURNPLATES

TLSSTP

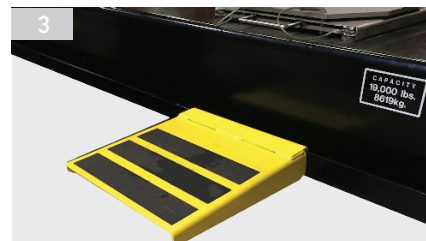
+ PULLEY/CABLES/ DOUBLE WALL DECK W Z RAIL



+ OPEN RUNWAY SLOTS UNDER REAR SLIP PLATES

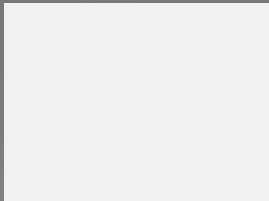
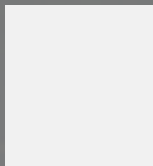
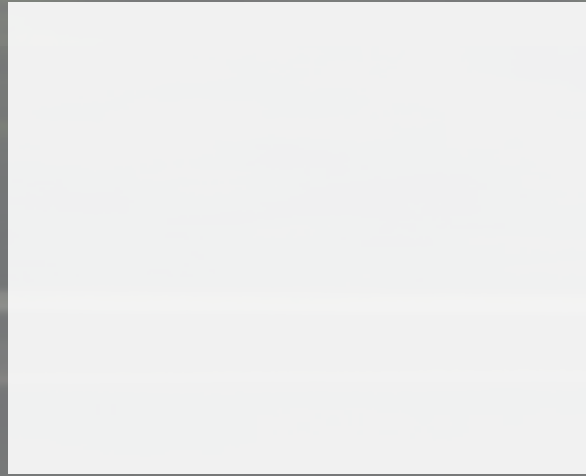


3



RUNWAY STEP PLATFORMS

TLSMWS



100% DESIGNED
+ BUILT IN
NORTH AMERICA





tllifts.com





TOTAL AUTOMOTIVE
LIFTING SOLUTIONS INC.

2300 Speers Rd Oakville, On L6L 2X8

t. (877) 799-5438

fax. (905) 891-1214

tllifts.com

